

**Sviluppo R.a.i. app. A**

Locale	Sup. (m <sup>2</sup> )	n° finestre	Dimensione finestra	Sup. aerolluminante utile (m <sup>2</sup> )	R.a.i.
Soggiorno-Pranzo	49.00	4	(1.60 x 2.50) a (1.60 x 2.50) b (1.60 x 2.50) c (1.60 x 2.50) d Totale =8.45	(1.60 x 1.50)=2.40 (1.60 x 1.50)=2.40 (1.60 x 0.83)=1.33 (1.60 x 1.45)=2.32 Totale =8.45	8.45/49.00= 1/5,80
Camera M	16.84	1	(1.60 x 2.50) a	(1.60 x 1.50)=2.40	2.40/16.84= 1/7,02
Camera 1	9.31	1	(0.90 x 2.50) a	(0.90 x 1.90)=1.71	1.71/9.31= 1/5,44
Camera 2	11.92	1	(1.60 x 2.50) a	(1.60 x 1.50)=2.40	2.40/11.92= 1/4,97

**Sviluppo R.a.i. app. B**

Locale	Sup. (m <sup>2</sup> )	n° finestre	Dimensione finestra	Sup. aerolluminante utile (m <sup>2</sup> )	R.a.i.
Soggiorno	31.60	3	(1.60 x 2.50) a (1.60 x 2.50) b (1.60 x 2.50) c Totale =7.20	(1.60 x 1.50)=2.40 (1.60 x 1.50)=2.40 (1.60 x 1.50)=2.40 Totale =7.20	7.20/31.60= 1/4,39
Cucina	8.13	1	(0.90 x 2.50) a	(0.90 x 1.50)=1.35	1.35/8.13= 1/6,02
Camera M	15.15	1	(1.60 x 2.50) a	(1.60 x 1.50)=2.40	2.40/15.15= 1/6,31
Camera 1	10.13	1	(1.60 x 2.50) a	(1.60 x 1.90)=3.04	3.04/10.13= 1/3,33
Camera 2	9.68	1	(1.60 x 2.50) a	(1.60 x 1.50)=2.40	2.40/9.68= 1/4,03

**Sviluppo R.a.i. app. A1**

Locale	Sup. (m <sup>2</sup> )	n° finestre	Dimensione finestra	Sup. aerolluminante utile (m <sup>2</sup> )	R.a.i.
Soggiorno-Pranzo	37.21	3	(1.60 x 2.50) a (1.60 x 2.50) b (1.60 x 2.50) c Totale =6.13	(1.60 x 1.50)=2.40 (1.60 x 1.50)=2.40 (1.60 x 0.83)=1.33 Totale =6.13	6.13/37.21= 1/6,07
Camera M	16.84	1	(1.60 x 2.50) a	(1.60 x 1.50)=2.40	2.40/16.84= 1/7,02
Camera 1	9.31	1	(0.90 x 2.50) a	(0.90 x 1.90)=1.71	1.71/9.31= 1/5,44
Camera 2	11.92	1	(1.60 x 2.50) a	(1.60 x 1.50)=2.40	2.40/11.92= 1/4,97

**Sviluppo R.a.i. app. B1**

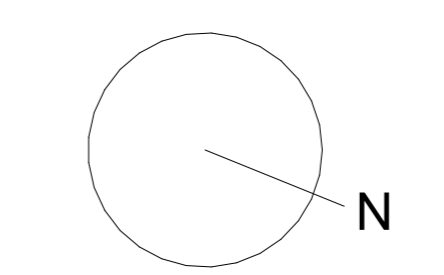
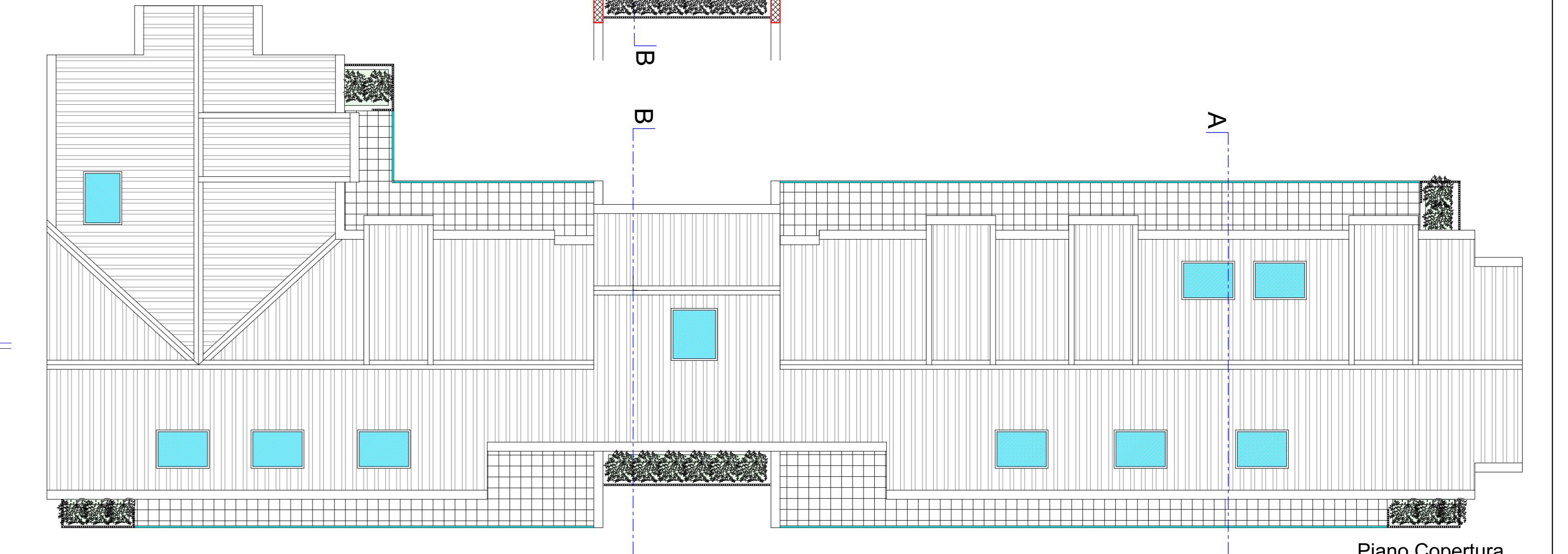
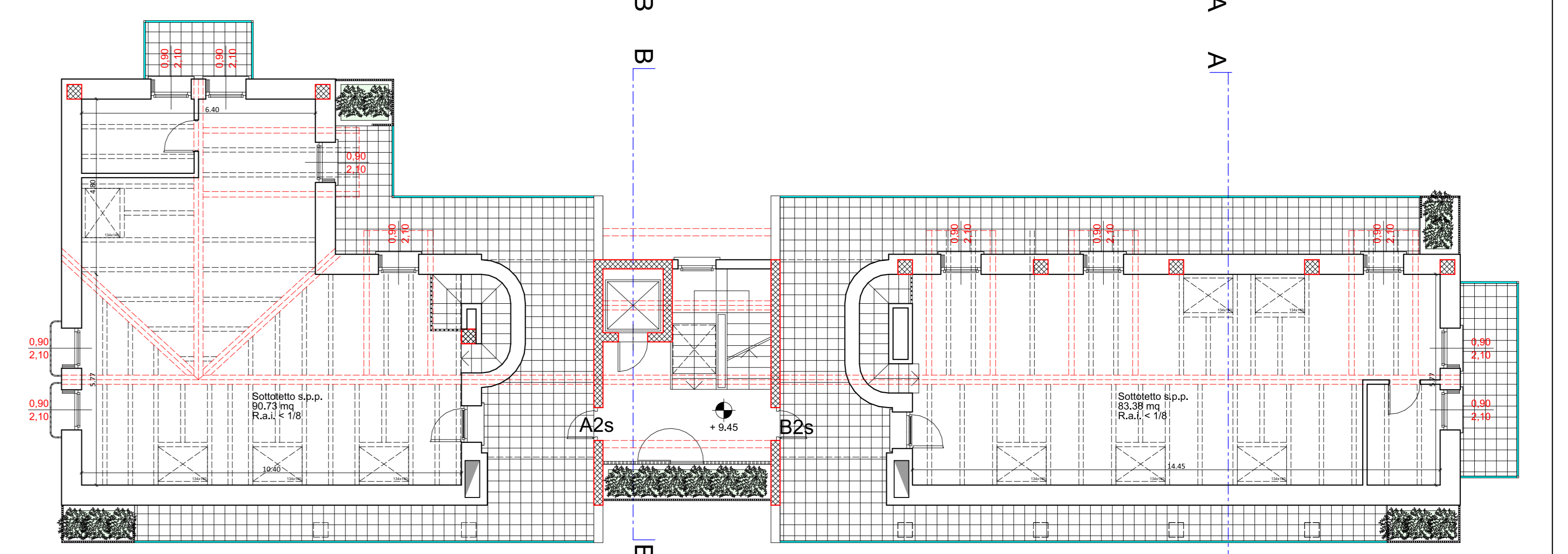
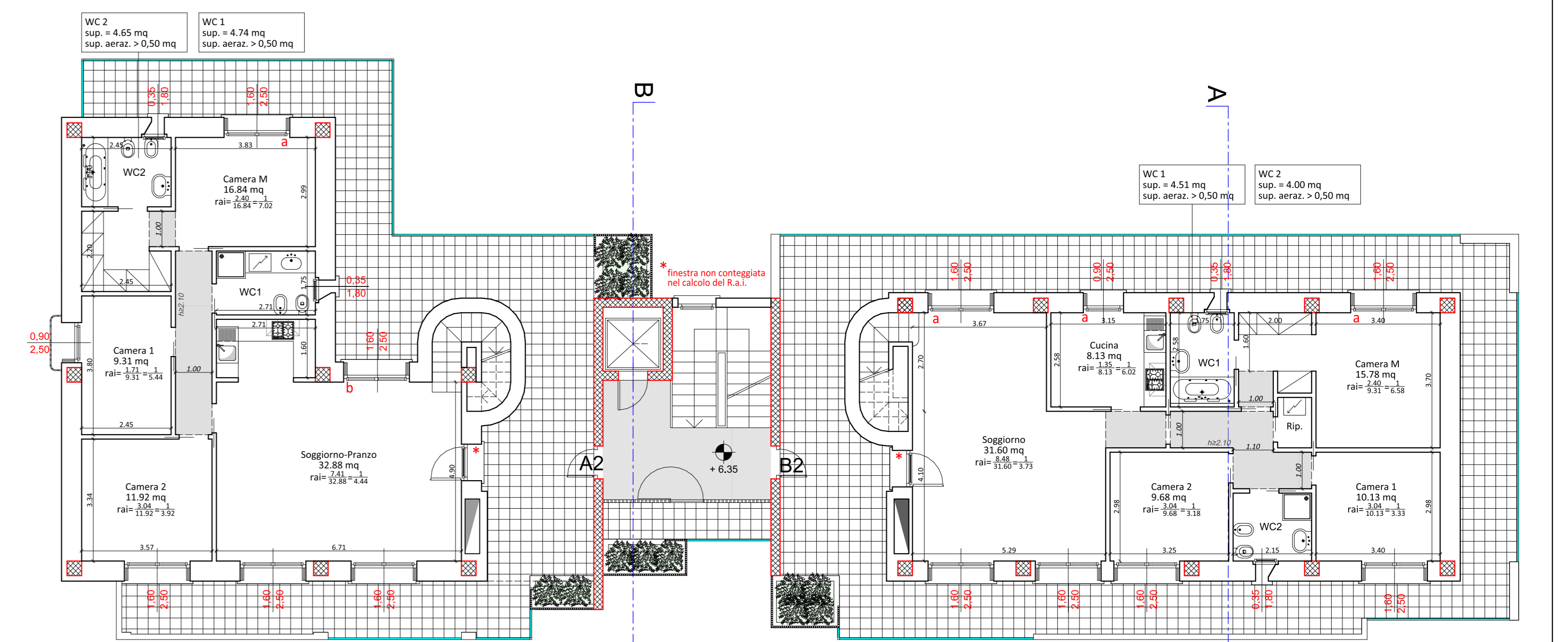
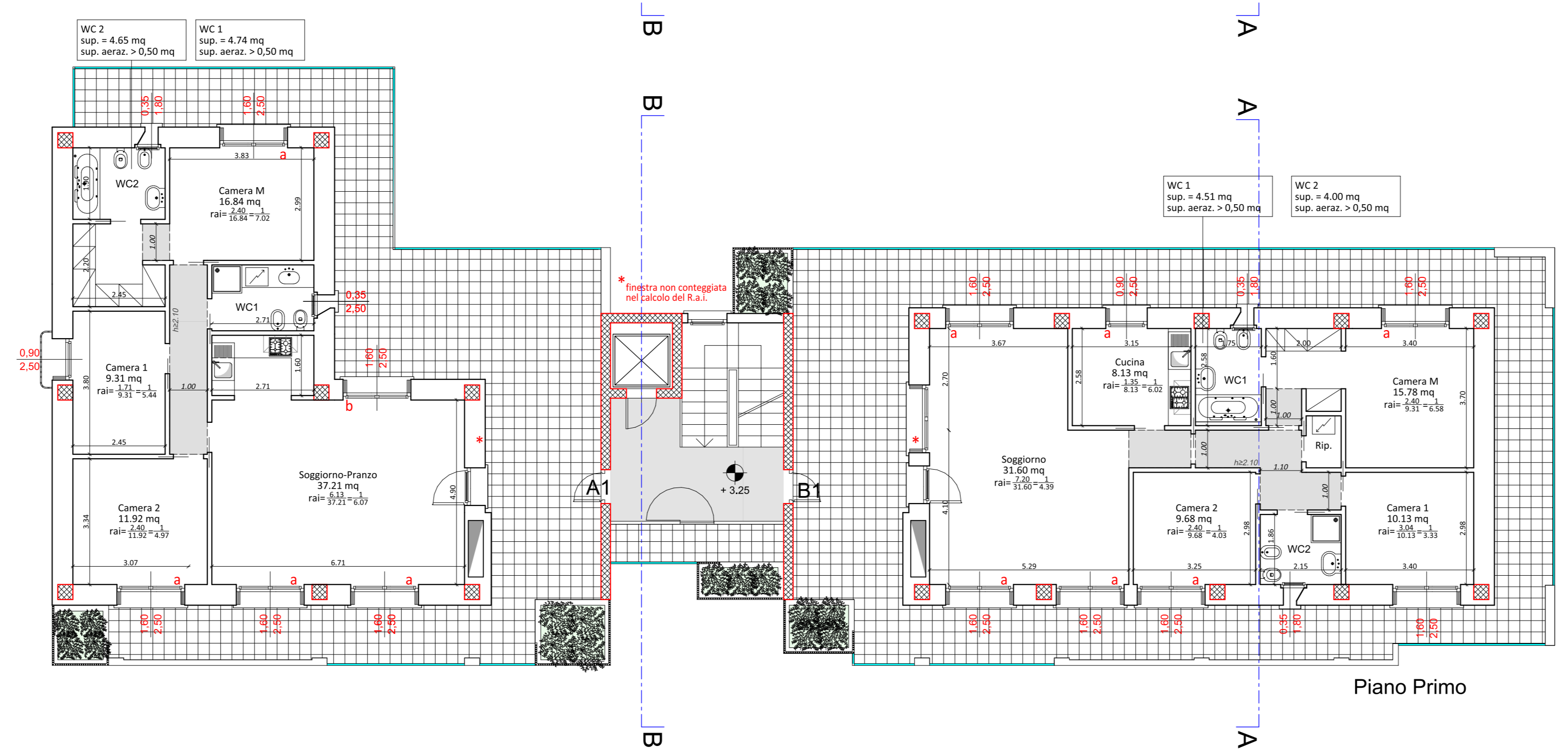
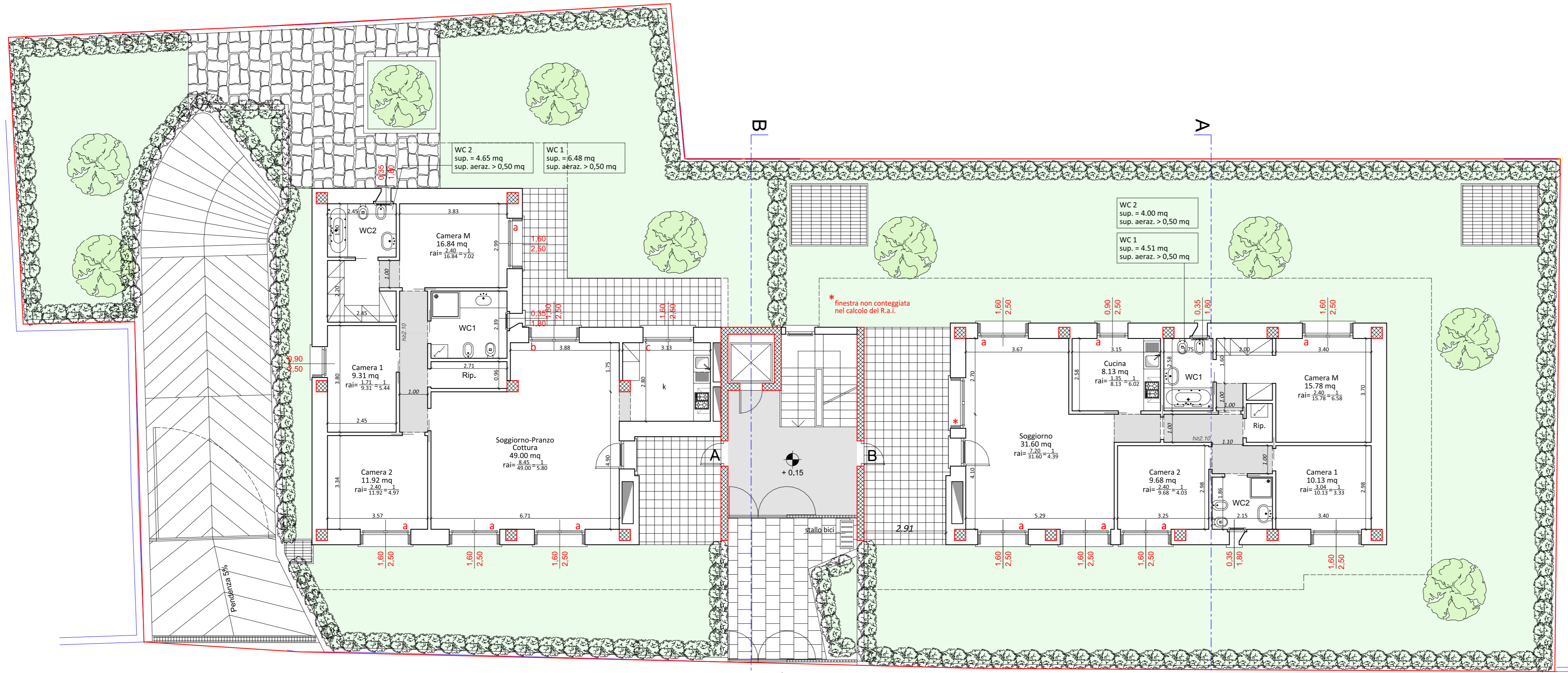
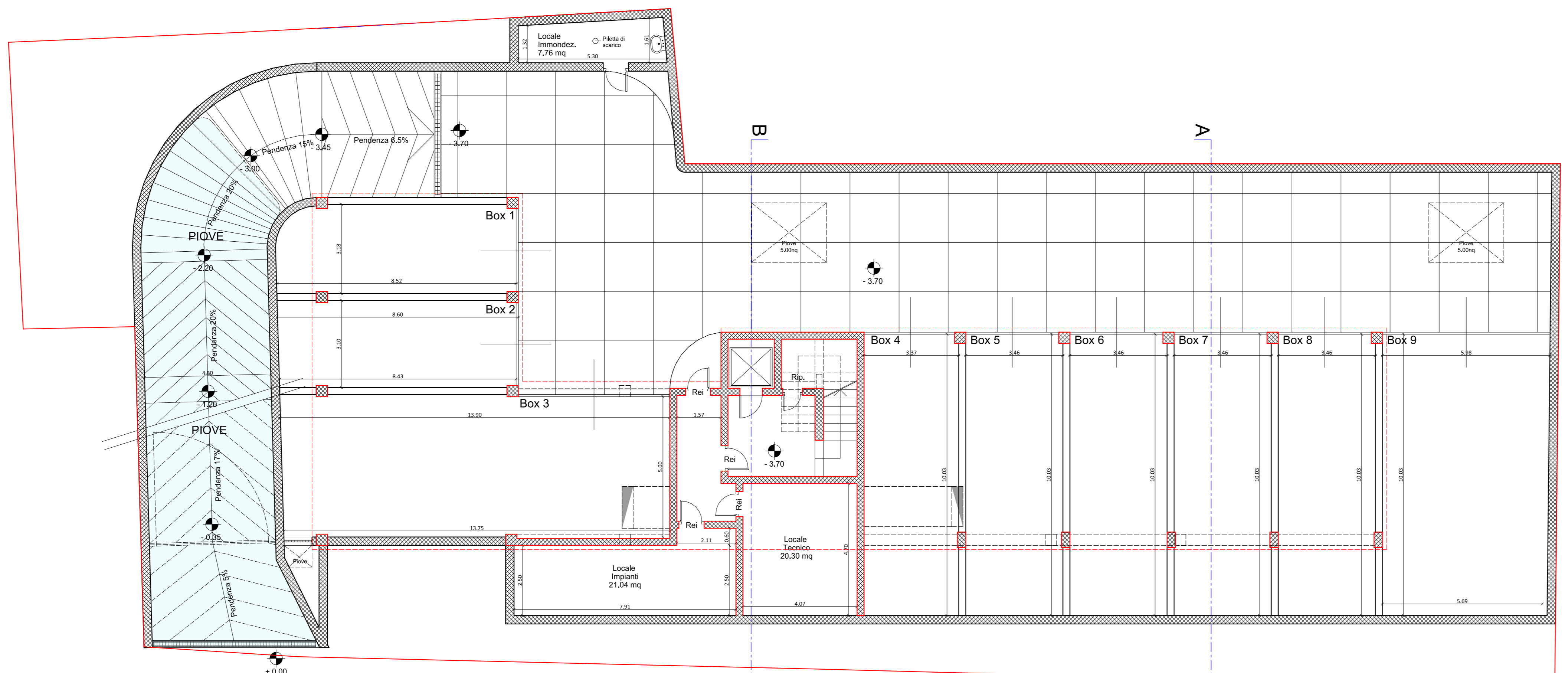
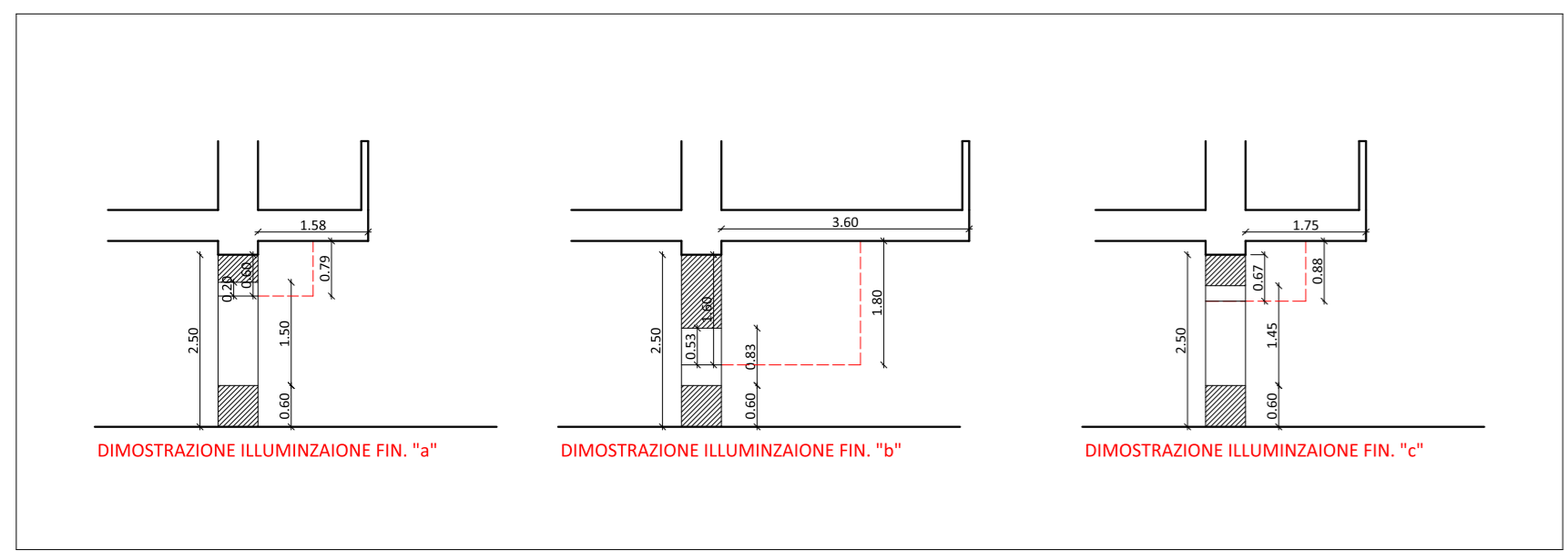
Locale	Sup. (m <sup>2</sup> )	n° finestre	Dimensione finestra	Sup. aerolluminante utile (m <sup>2</sup> )	R.a.i.
Soggiorno	31.60	3	(1.60 x 2.50) a (1.60 x 2.50) b (1.60 x 2.50) c Totale =7.20	(1.60 x 1.50)=2.40 (1.60 x 1.50)=2.40 (1.60 x 1.50)=2.40 Totale =7.20	7.20/31.60= 1/4,39
Cucina	8.13	1	(0.90 x 2.50) a	(0.90 x 1.50)=1.35	1.35/8.13= 1/6,02
Camera M	15.78	1	(1.60 x 2.50) a	(1.60 x 1.50)=2.40	2.40/15.78= 1/6,58
Camera 1	10.13	1	(1.60 x 2.50) a	(1.60 x 1.90)=3.04	3.04/10.13= 1/3,33
Camera 2	9.68	1	(1.60 x 2.50) a	(1.60 x 1.50)=2.40	2.40/9.68= 1/4,03

**Sviluppo R.a.i. app. A2**

Locale	Sup. (m <sup>2</sup> )	n° finestre	Dimensione finestra	Sup. aerolluminante utile (m <sup>2</sup> )	R.a.i.
Soggiorno-Pranzo	32.88	3	(1.60 x 2.50) a (1.60 x 2.50) b (1.60 x 2.50) c Totale =7.41	(1.60 x 1.90)=3.04 (1.60 x 1.90)=3.04 (1.60 x 0.83)=1.33 Totale =7.41	7.41/32.88= 1/4,44
Camera M	16.84	1	(1.60 x 2.50) a	(1.60 x 1.50)=2.40	2.40/16.84= 1/7,02
Camera 1	9.31	1	(0.90 x 2.50) a	(0.90 x 1.90)=1.71	1.71/9.31= 1/5,44
Camera 2	11.92	1	(1.60 x 2.50) a	(1.60 x 1.90)=3.04	3.04/11.92= 1/3,92

**Sviluppo R.a.i. app. B2**

Locale	Sup. (m <sup>2</sup> )	n° finestre	Dimensione finestra	Sup. aerolluminante utile (m <sup>2</sup> )	R.a.i.
Soggiorno	31.60	3	(1.60 x 2.50) a (1.60 x 2.50) b (1.60 x 2.50) c Totale =8.48	(1.60 x 1.90)=3.04 (1.60 x 1.90)=3.04 (1.60 x 1.50)=2.40 Totale =8.48	8.48/31.60= 1/3,73
Cucina	8.13	1	(0.90 x 2.50) a	(0.90 x 1.50)=1.35	1.35/8.13= 1/6,02
Camera M	15.78	1	(1.60 x 2.50) a	(1.60 x 1.50)=2.40	2.40/15.78= 1/6,58
Camera 1	10.13	1	(1.60 x 2.50) a	(1.60 x 1.90)=3.04	3.04/10.13= 1/3,33
Camera 2	9.68	1	(1.60 x 2.50) a	(1.60 x 1.90)=3.04	3.04/9.68= 1/3,18



IL PROGETTISTA \_\_\_\_\_  
 IL D. LAVORI \_\_\_\_\_  
 IL COSTRUTTORE \_\_\_\_\_  
 IL PROPRIETARIO \_\_\_\_\_

studio CARAVIATTI e CRIPPA

**ABBA s.a.s.**  
 Domanda di Permesso di Costruire Convenzionato  
 Via Abba, sn - Monza

6218AB 3  
 rapp. 1:100  
 rapp.  
 rapp.

data : Apr 2020  
 agg. : Giu 2020

PIANTE P. INTERRATO, TERRA, 1°, 2°, SSP, COPERTURA - PROGETTO

CARAVIATTI e CRIPPA PROGETTI